

WRG Type

Examples of model number formation

WRG 2 - 150 H - 26Z

1 2 3 4 5

- 1 Part No. 2 Roller Size 3 Length of Race rail
 4 Accuracy : Normal(No symbol), High(H), Precision(P)
 5 The number of Roller

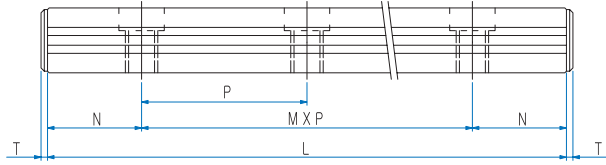
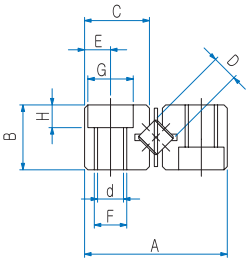
* Please inquire us for your specially required dimensions & applicaton



Part No.	Max. Stroke	D	No.of Roller Z	Dimensions					
				L	A	B	C	M×P	N
WRG 1020	12	1.5	5	20	8.5	4	3.8	1×10	5
WRG 1030	22		7	30				2×10	
WRG 1040	27		10	40				3×10	
WRG 1050	32		13	50				4×10	
WRG 1060	37		16	60				5×10	
WRG 1070	42		19	70				6×10	
WRG 1080	52		21	80				7×10	
WRG 2030	18		2	5				30	
WRG 2045	24	8		45	2×15				
WRG 2060	30	11		60	3×15				
WRG 2075	44	13		75	4×15				
WRG 2090	50	16		90	5×15				
WRG 2105	64	18		105	6×15				
WRG 2120	70	21		120	7×15				
WRG 2135	84	23		135	8×15				
WRG 2150	90	26		150	9×15				
WRG 2165	96	29		165	10×15				
WRG 2180	102	32		180	11×15				
WRG 3050	28	3		7	50	18	8	8.3	1×25
WRG 3075	48		10	75	2×25				
WRG 3100	58		14	100	3×25				
WRG 3125	78		17	125	4×25				
WRG 3150	88		21	150	5×25				
WRG 3175	108		24	175	6×25				
WRG 3200	118		28	200	7×25				
WRG 3225	138		31	225	8×25				
WRG 3250	148		35	250	9×25				
WRG 3275	168		38	275	10×25				
WRG 3300	178		42	300	11×25				
WRG 3325	198		45	325	12×25				
WRG 3350	208		49	350	13×25				

Note 1) 1Set = 4 Race rail + 2 Roller cages + 8 Stoppers.

Note 2) Basic load ratings are based on 1 set.



Unit : mm

Dimensions						Basic load ratings		Mass kg/m (Rail/EA)	Part No.
E	F	d	G	H	T	Dyn. C (kN)	Stat. Co (kN)		
1.8	M2	1.65	3	1.4	1.5	0.46	0.61	9	WRG 1020
						0.63	0.92	13	WRG 1030
						0.95	1.53	18	WRG 1040
						1.09	1.84	22	WRG 1050
						1.37	2.45	26	WRG 1060
						1.50	2.75	30	WRG 1070
						1.63	3.06	35	WRG 1080
2.5	M3	2.55	4.4	2	2	0.46	1.08	28	WRG 2030
						0.81	2.17	43	WRG 2045
						0.96	2.71	57	WRG 2060
						1.11	3.25	71	WRG 2075
						1.39	4.34	85	WRG 2090
						1.52	4.88	98	WRG 2105
						1.65	5.42	112	WRG 2120
						1.78	5.96	126	WRG 2135
						2.03	7.05	140	WRG 2150
						2.15	7.59	153	WRG 2165
2.38	8.67	166	WRG 2180						
3.5	M4	3.30	6	3.1	2.5	2.71	3.67	98	WRG 3050
						4.06	6.11	148	WRG 3075
						5.28	8.55	195	WRG 3100
						5.86	9.78	242	WRG 3125
						6.98	12.2	289	WRG 3150
						8.05	14.7	336	WRG 3175
						9.08	17.1	384	WRG 3200
						9.58	18.33	431	WRG 3225
						10.56	20.8	478	WRG 3250
						11.52	23.2	525	WRG 3275
						12.45	25.7	572	WRG 3300
						12.91	26.9	619	WRG 3325
						13.82	29.3	647	WRG 3350

1N ≙ 0.102kgf

Cross Roller Guide Way

WRG Type

Examples of model number formation

WRG | 2 | - 300 | H | - 20Z

1 2 3 4 5

- 1 Part No. 2 Roller Size 3 Length of Race rail
 4 Accuracy : Normal(No symbol), High(H), Precision(P)
 5 The number of Roller

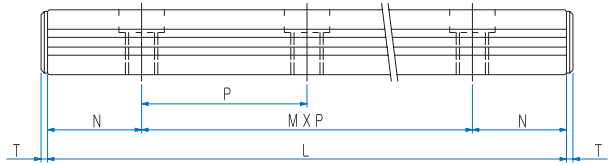
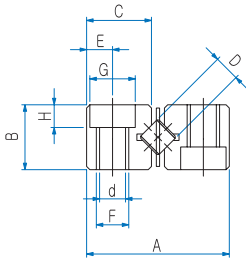
* Please inquire us for your specially required dimensions & applicaton



Part No.	Max. Stroke	D	No. of Roller Z	Dimensions					
				L	A	B	C	M×P	N
WRG 4080	58	4	7	80	22	11	10.2	1×40	20
WRG 4120	82		11	120				2×40	
WRG 4160	106		15	160				3×40	
WRG 4200	130		19	200				4×40	
WRG 4240	154		23	240				5×40	
WRG 4280	178		27	280				6×40	
WRG 4320	202		31	320				7×40	
WRG 4360	226		35	360				8×40	
WRG 4400	250		39	400				9×40	
WRG 4440	274		43	440				10×40	
WRG 4480	298	47	480	11×40					
WRG 6100	56	6	7	100	31	15	14.2	1×50	25
WRG 6150	96		10	150				2×50	
WRG 6200	136		13	200				3×50	
WRG 6250	156		17	250				4×50	
WRG 6300	196		20	300				5×50	
WRG 6350	216		24	350				6×50	
WRG 6400	256		27	400				7×50	
WRG 6450	276		31	450				8×50	
WRG 6500	316		34	500				9×50	
WRG 6550	336		38	550				10×50	
WRG 6600	376	41	600	11×50					
WRG 9200	118	9	10	200	44	22	20.2	1×100	50
WRG 9300	178		15	300				2×100	
WRG 9400	238		20	400				3×100	
WRG 9500	298		25	500				4×100	
WRG 9600	358		30	600				5×100	
WRG 9700	418		35	700				6×100	
WRG 9800	478		40	800				7×100	
WRG 9900	538		45	900				8×100	
WRG 91000	598		50	1000				9×100	

Note 1) 1Set = 4 Race rail + 2 Roller cages + 8 Stoppers.

Note 2) Basic load ratings are based on 1 set.



Unit : mm

Dimensions						Basic load ratings		Mass kg/m (Rail/EA)	Part No.
E	F	d	G	H	T	Dyn. C (kN)	Stat. Co (kN)		
4.5	M5	4.3	8	4.2	2.5	5.92	8.10	260	WRG 4080
						8.85	13.5	400	WRG 4120
						11.5	18.9	530	WRG 4160
						14.0	24.3	660	WRG 4200
						16.4	29.7	790	WRG 4240
						18.7	35.1	920	WRG 4280
						20.88	40.5	1050	WRG 4320
						23.0	45.9	1180	WRG 4360
						25.1	51.3	1300	WRG 4400
						27.1	56.7	1430	WRG 4440
29.1	62.1	1530	WRG 4480						
6	M6	5.2	9.5	5.2	3	16.4	22.7	630	WRG 6100
						24.5	37.8	950	WRG 6150
						28.2	45.4	1260	WRG 6200
						35.4	60.5	1570	WRG 6250
						42.1	75.6	1880	WRG 6300
						48.5	90.7	2190	WRG 6350
						51.7	98.3	2490	WRG 6400
						57.8	113	2810	WRG 6450
						63.7	128	3110	WRG 6500
						69.5	143	3420	WRG 6550
72.3	151	3730	WRG 6600						
9	M8	6.8	10.5	6.2	4	62.3	94.8	2710	WRG 9200
						81.1	133	4050	WRG 9300
						107	190	5350	WRG 9400
						123	228	6680	WRG 9500
						147	284	8010	WRG 9600
						162	322	9330	WRG 9700
						184	379	10650	WRG 9800
						198	417	11970	WRG 9900
						219	474	13300	WRG 91000

1N ≙ 0.102kgf

WRGO Type

Examples of model number formation

WRGO 6 - 300 H - 20Z

1 2 3 4 5

- 1 Part No. 2 Roller Size 3 Length of Race rail
 4 Accuracy : Normal(No symbol), High(H), Precision(P)
 5 The number of Roller

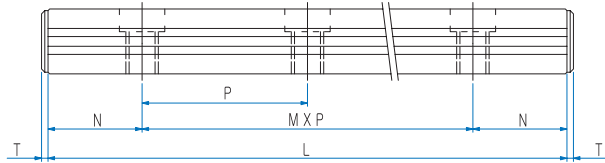
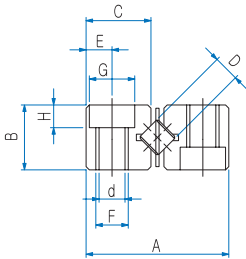
* Please inquire us for your specially required dimensions & applicaton



Part No.	Max. Stroke	D	No. of Roller Z	Dimensions					
				L	A	B	C	M×P	N
WRGO 6100	56	6	7	100	30	15	14.4	1×50	25
WRGO 6150	96		10	150				2×50	
WRGO 6200	136		13	200				3×50	
WRGO 6250	156		17	250				4×50	
WRGO 6300	196		20	300				5×50	
WRGO 6350	216		24	350				6×50	
WRGO 6400	256		27	400				7×50	
WRGO 6450	276		31	450				8×50	
WRGO 6500	316		34	500				9×50	
WRGO 6550	336		38	550				10×50	
WRGO 6600	376		41	600				11×50	
WRGO 9200	118	9	10	200	40	20	19.2	1×100	50
WRGO 9300	178		15	300				2×100	
WRGO 9400	238		20	400				3×100	
WRGO 9500	298		25	500				4×100	
WRGO 9600	359		30	600				5×100	
WRGO 9700	418		35	700				6×100	
WRGO 9800	478		40	800				7×100	
WRGO 9900	538		45	900				8×100	
WRGO 91000	598		50	1000				9×100	
WRGO 91100	658		55	1100				10×100	
WRGO 91200	718		60	1200				11×100	

Note 1) 1Set = 4 Race rail + 2 Roller cages + 8 Stoppers.

Note 2) Basic load ratings are based on 1 set.



Unit : mm

Dimensions						Basic load ratings		Mass kg/m (Rail/EA)	Part No.
E	F	d	G	H	T	Dyn. C (kN)	Stat. Co (kN)		
6	M6	5.2	9.5	5.2	3	16.4	22.7	640	WRGO 6100
						24.5	37.8	940	WRGO 6150
						28.2	45.4	1250	WRGO 6200
						35.4	60.5	1560	WRGO 6250
						42.1	75.6	1860	WRGO 6300
						48.5	90.7	2170	WRGO 6350
						51.7	98.3	2490	WRGO 6400
						57.8	113	2780	WRGO 6450
						63.7	128	3090	WRGO 6500
						69.5	143	3390	WRGO 6550
72.3	151	3700	WRGO 6600						
8	M8	6.8	10.5	6.2	4	62.3	94.8	2280	WRGO 9200
						81.1	133	3400	WRGO 9300
						107	190	4510	WRGO 9400
						123	228	5620	WRGO 9500
						147	284	6740	WRGO 9600
						162	322	7850	WRGO 9700
						184	379	8960	WRGO 9800
						198	417	10070	WRGO 9900
						219	474	11190	WRGO 91000
						232	512	12300	WRGO 91100
252	569	13410	WRGO 91200						

1N ≙ 0.102kgf

WRG-AC Type

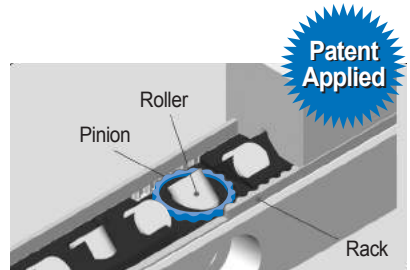
Examples of model number formation

WRG 3 - 125 AC H - 17Z

1 2 3 4 5 6

- 1 Part No. 2 Roller Size 3 Length of Race rail
 4 Anti-Creep
 5 Accuracy : Normal(No symbol), High(H), Precision(P)
 6 The number of Roller

* Please inquire us for your specially required dimensions & applicator

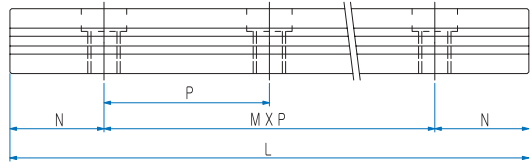
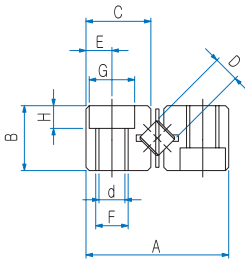


Part No.	Max. Stroke	D	No. of Roller Z	Dimensions					
				L	A	B	C	M×P	N
WRG 2030 AC	18	2	4	30	12	6	5.4	1×15	7.5
WRG 2045 AC	24		7	45				2×15	
WRG 2060 AC	30		10	60				3×15	
WRG 2075 AC	44		12	75				4×15	
WRG 2090 AC	50		15	90				5×15	
WRG 2105 AC	64		17	105				6×15	
WRG 2120 AC	70		20	120				7×15	
WRG 2135 AC	84		22	135				8×15	
WRG 2150 AC	90		25	150				9×15	
WRG 2165 AC	96		28	165				10×15	
WRG 2180 AC	102	31	180	11×15					
WRG 3050 AC	28	3	7	50	18	8	8.3	1×25	12.5
WRG 3075 AC	48		10	75				2×25	
WRG 3100 AC	58		14	100				3×25	
WRG 3125 AC	78		17	125				4×25	
WRG 3150 AC	88		21	150				5×25	
WRG 3175 AC	108		24	175				6×25	
WRG 3200 AC	118		28	200				7×25	
WRG 3225 AC	138		31	225				8×25	
WRG 3250 AC	148		35	250				9×25	
WRG 3275 AC	168		38	275				10×25	
WRG 3300 AC	178		42	300				11×25	
WRG 3325 AC	198		45	325				12×25	
WRG 3350 AC	208		49	350				13×25	
WRG 4080 AC	58		4	7				80	
WRG 4120 AC	82	11		120	2×40				
WRG 4160 AC	106	15		160	3×40				
WRG 4200 AC	130	19		200	4×40				
WRG 4240 AC	154	23		240	5×40				
WRG 4280 AC	178	27		280	6×40				
WRG 4320 AC	202	31		320	7×40				
WRG 4360 AC	226	35		360	8×40				
WRG 4400 AC	250	39		400	9×40				
WRG 4440 AC	274	43		440	10×40				
WRG 4480 AC	298	47		480	11×40				

Note 1) 1Set = 4 Race rail + 2 Roller cages + 8 Stoppers.

2) Basic load ratings are based and mass on 1 set.

3) Needed stopper additional indication is required.



Unit : mm

Dimensions					Basic load ratings		Mass kg/m (Rail/EA)	Part No.
E	F	d	G	H	Dyn. C (kN)	Stat. Co (kN)		
2.5	M3	2.55	4.4	2	0.62	0.73	28	WRG 2030 AC
					0.86	1.10	43	WRG 2045 AC
					1.28	1.83	57	WRG 2060 AC
					1.48	2.20	71	WRG 2075 AC
					1.67	2.56	85	WRG 2090 AC
					1.85	2.93	98	WRG 2105 AC
					2.2	3.66	112	WRG 2120 AC
					2.37	4.03	126	WRG 2135 AC
					2.54	4.39	140	WRG 2150 AC
					2.86	5.13	153	WRG 2165 AC
					3.02	5.49	166	WRG 2180 AC
3.5	M4	3.30	6	3.1	2.71	3.67	98	WRG 3050 AC
					4.06	6.11	148	WRG 3075 AC
					5.28	8.55	195	WRG 3100 AC
					5.86	9.78	242	WRG 3125 AC
					6.98	12.2	289	WRG 3150 AC
					8.05	14.7	336	WRG 3175 AC
					9.08	17.1	384	WRG 3200 AC
					9.58	18.33	431	WRG 3225 AC
					10.56	20.8	478	WRG 3250 AC
					11.52	23.2	525	WRG 3275 AC
					12.45	25.7	572	WRG 3300 AC
12.91	26.9	619	WRG 3325 AC					
13.82	29.3	647	WRG 3350 AC					
4.5	M5	4.3	8	4.2	5.92	8.10	260	WRG 4080 AC
					8.85	13.5	400	WRG 4120 AC
					11.5	18.9	530	WRG 4160 AC
					14.0	24.3	660	WRG 4200 AC
					16.4	29.7	790	WRG 4240 AC
					18.7	35.1	920	WRG 4280 AC
					20.88	40.5	1050	WRG 4320 AC
					23.0	45.9	1180	WRG 4360 AC
					25.1	51.3	1300	WRG 4400 AC
					27.1	56.7	1430	WRG 4440 AC
					29.1	62.1	1530	WRG 4480 AC

1N ≙ 0.102kgf

Cross Roller Guide Way